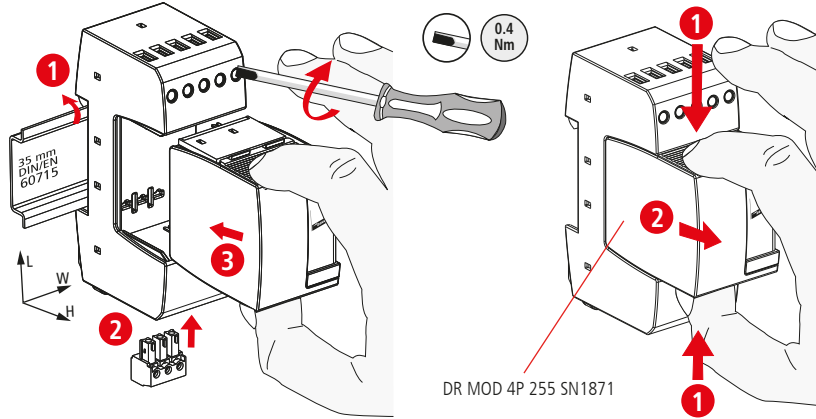




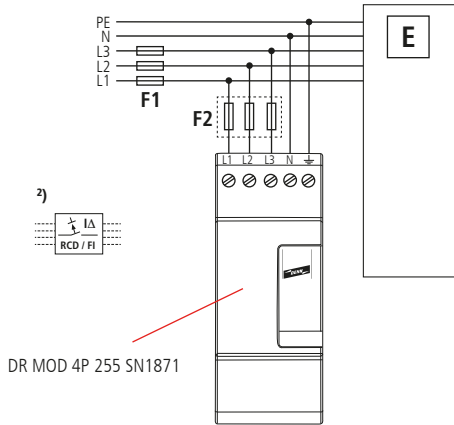
DEHNrail modular DR M 4P 255 SN1872 FM

- DE Einbauanleitung
- GB Installation instructions
- IT Istruzioni di montaggio
- FR Instructions de montage
- NL Montagehandleiding
- ES Instrucciones de montaje
- PT Instruções de montagem
- DK Monteringsvejledning
- SE Monteringsanvisning
- FI Asennusohje
- GR Οδηγίες συναρμολόγησης
- PL Instrukcja montażu
- CZ Montážní návod
- TR Kurulum Talimatları
- RU Инструкция по монтажу
- CN 安装说明
- HU Szerelési útmutató
- JP 設置説明書

III IEC 61643-11...
3 EN 61643-11...



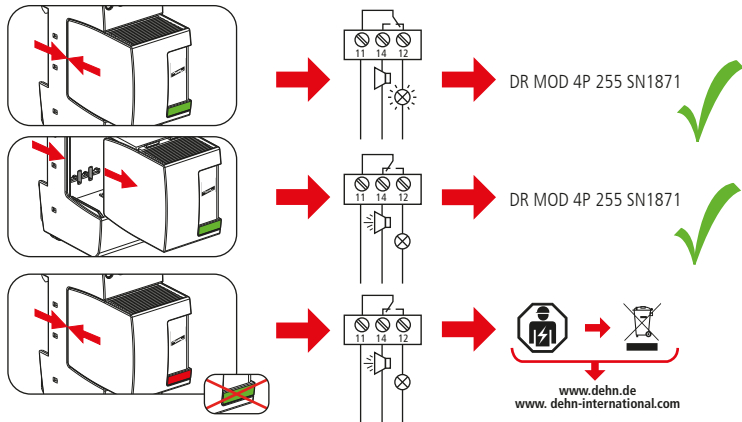
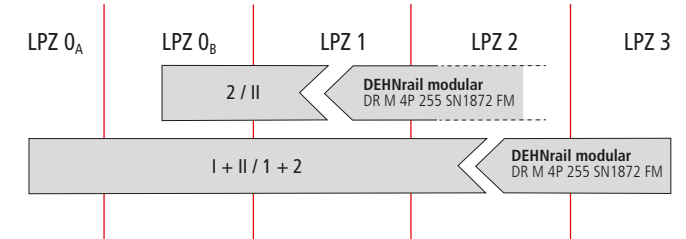
DR M 4P 255 SN1872 FM



DEHNrail modular DR M 4P 255 SN1872 FM	
F1	F1 > 32 A gG ↓ F2 ≤ 32 A gG
F2	F1 ≤ 32 A gG ↓ F2

DR M 4P 255 SN1872 FM	
U _N / Tol.: +10%	230 / 400 V (50/60 Hz)
U _c	255 / 440 V
max. I _{sc}	32 A gG (B 32 A)
I _{scCR}	6 kA _{rms} (1kA _{ms})
θ°	-40°C ... + 80°C
Φ	5% ... 95%
I _{FE}	< 5 μA
IP 1)	20
L x W x H	90 mm x 36 mm x 73 mm

min. □ L1, L2, L3, N, ⊥	0.5 mm ²	10 mm
max. □ L1, L2, L3, N, ⊥	2.5 mm ²	4 mm ²



www.dehn.de
www.dehn-international.com

DEHNrail modular DR M 4P 255 SN1872 FM	
	U_N / I_N AC: 250 V / 0.5 A DC: 250 V / 0.1 A 125 V / 0.2 A 75 V / 0.5 A
	max. 1.5 mm ²

